

LIV 5 VALVE MANIFOLD

SERIES 5T1

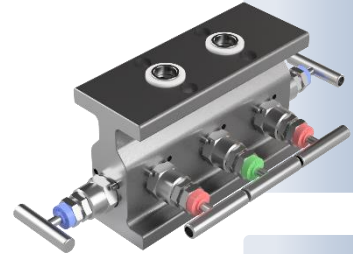
With double flange for direct transmitter mounting

Principle

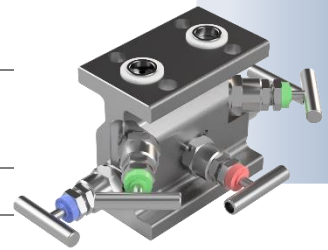
LIV valve manifold is directly mounted on a differential pressure transmitter having the standard 54 mm (2 1/8") distance between plus and minus connection. The manifold has 2 isolating, 3 equalizing and/or vent valves.

Construction.

- The valve body is machined from a profiled bar stock material.
- The raw material of the manifolds can be supplied according to NORSOK M 630 or to customer specific requirements.
- The 2 inlet connections are according to EN 61518 type A, (standard), 1/2" NPT int or 1/4" NPT int.
- The 2 outlet connections (transmitter side) are according to EN 61518 type A (standard) or type B
- The valve spindle thread is external to stuffing box.
- The manifolds have back-seating and non-rotating valve tip
- The dust covers are coloured for application indication (isolate, equalize, vent)
- The manifolds are designed for PED 2014/68/EU.



TYPE
5T100



TYPE
5T110

Technical Data

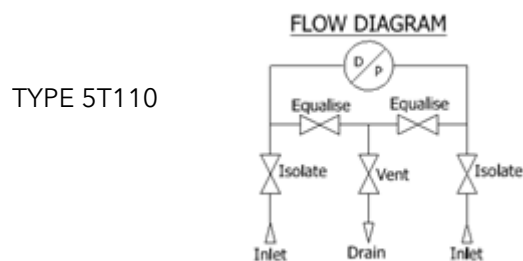
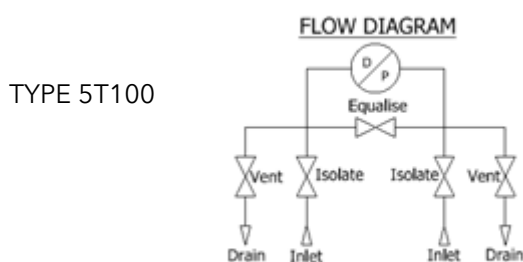
Material	AISI 316, 22Cr Duplex, 25Cr Duplex, 6Mo, Titanium, Monel 400, Hastelloy C, Inconel 625 and 825
Packing	PTFE (standard), Graphite
Pressure rating	6000 psi (420 bar)
Temperature	+50 to +120 °C
Operation	T-bar, Anti tamper.
Types	5T100, 5T110 with 1 drain, 5T120 with 2 process drain

Testing and Documentation

- Material certificate to EN 10204-3.1
- Certificate of compliance to NACE MR 01-75 or EN 15156
- Optional: cleaned for oxygen and hydrogen
- Pressure test certificate

Accessories

- 7/16" UNF x 25 mm or M10 x 25 mm bolts and gaskets for transmitter mounting
- 1/4" NPT plugs (for manifold with drain connection)
- Oval flange with 1/2" NPT int. in AISI 316 for IEC 61518 type A.
- Thermal channel.



HOW TO ORDER

Choose a code for each of the configuration steps. For special orders, please reach out to our sales team.

1 VALVE TYPE		2 MANIFOLD CONNECTION INLET		3 CONNECTION TYPE		4 MANIFOLD CONNECTION OUTLET	
5T100	5 valve	0	EN 61518 type B	0	EN 61518	A	With spigot
5T110	5 valve with 1 drain connection	1	1/4"	A	NPT	B	Without spigot
5T120	5 valve with process drain	3	1/2"	B	BSPP (G)		
5 MATERIAL							
	<i>Body material</i>		<i>Trim material</i>				
02	A479 316		AISI 316				
04	A479 22Cr duplex		22Cr. Duplex				
06	A479 25Cr duplex		25Cr. Duplex				
08	A479 6Mo 6Mo		6Mo				
10	Titanium		Titanium				
11	Monel 400		Monel 400				
12	Hastelloy C-276		Hastelloy C-276				
13	Inconel 625		Inconel 625				
6 SEALS		7 PRESSURE RATING		8 VALVE BONNET			
T	PTFE solid	06	6000 psi	01	5 x T-bar		
G	Graphite			02	5 x Anti tamper		
				03	3 x T-bar, 2 x T-bar isolate		
				04	2 x T-bar, 3 x Anti tamper		
				05	5 x Anti tamper lockable		
				09	Specify combination		

Example: Type 5T100.00A02T0601

5 valve manifold for direct transmitter mounting with drain connections, EN 61518
AISI 316, PTFE, 6000 psi, 5 x T-bar.